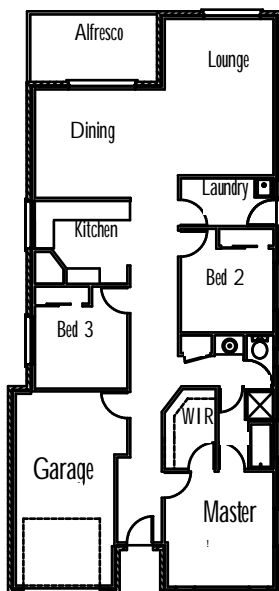


*stylish & affordable*



## Stirling Homes Queensland THE FAMILY

This design suits its name perfectly, accommodating for today's family. This three bedroom home is true value for money with a single garage, 2 way bathroom, powder room, built in robes, walk in robe and separate laundry. The open plan living and dining areas are generously spaced and flow out onto the alfresco area. A large corner pantry features in the kitchen, giving ample storage space for everyday items. The Family design is a place you can call home.



### FLOOR PLAN

LIVING AREA:	138.2m <sup>2</sup>
OUTDOOR AREA:	9.8m <sup>2</sup>
TOTAL:	148m <sup>2</sup>



# Cottage Collection