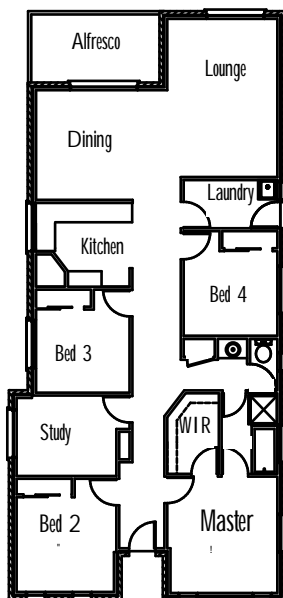


stylish & affordable



Stirling Homes Queensland THE ENTERTAINER

If you are chasing value for money, the Entertainer is the design for you. With four bedrooms, study, separate laundry and separate powder room, there is a space for everyone and everything. The Master bedroom features a walk in robe, while the other bedrooms all feature built in robes. There is also a two way bathroom giving easy access for the whole family. There are ample living and dining areas, which flow out onto the alfresco. This home lives up to its name, a definite entertainers delight.



FLOOR PLAN

LIVING AREA:	138.2m ²
OUTDOOR AREA:	9.8m ²
TOTAL:	148m ²



Cottage Collection