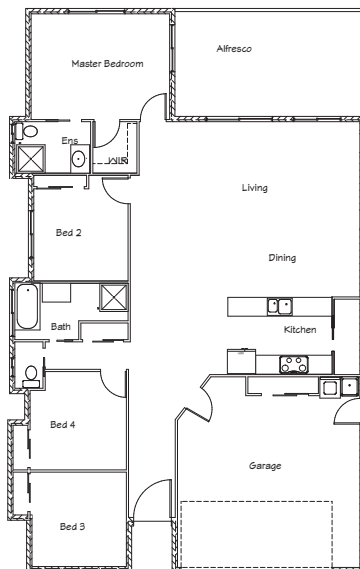




## Stirling Homes Queensland THE UTAH

The Utah is the perfect design for city living, created to suit a narrow allotment. This is a practical and modern design with living and dining areas flowing out onto the alfresco area. The bedrooms are all cleverly located down the side of the home, which gives your living areas the highly desired open feel. The master bedroom features its own Ensuite, walk in robe and private access to the alfresco area, while the children's bedrooms all incorporate built in robes. Add in plenty of storage space and the Utah becomes the perfect design for home owners and investors alike.



### FLOOR PLAN

<b>LIVING:</b>	138.8m <sup>2</sup>
<b>ALFRESCO:</b>	21.5m <sup>2</sup>
<b>GARAGE:</b>	35.7m <sup>2</sup>
<b>TOTAL:</b>	196m <sup>2</sup>

