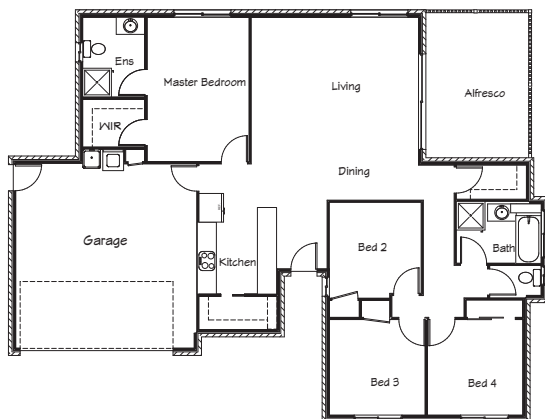




## Stirling Homes Queensland THE RHODES

A unique design, the Rhodes offers open plan living and dining areas so that the whole family can enjoy a relaxed lifestyle together. The children's bedrooms are located toward the front of the home, while the master is situated at the rear, creating calm and privacy for all family members. The smart storage spaces in this design are a perfect feature for the growing family with a walk in pantry, walk-in linen, built in robes in all bedrooms and walk in robe in the master.

The Rhodes is truly a stylish and contemporary home.



### FLOOR PLAN

<b>LIVING:</b>	125.9m <sup>2</sup>
<b>ALFRESCO:</b>	16.3m <sup>2</sup>
<b>GARAGE:</b>	37.2m <sup>2</sup>
<b>TOTAL:</b>	179.4m <sup>2</sup>

