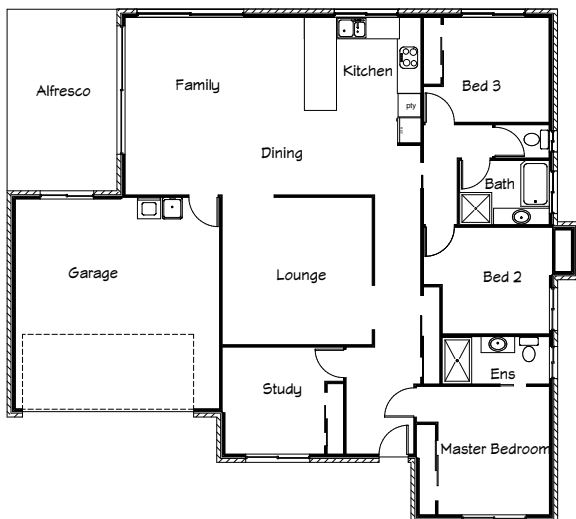




Stirling Homes Queensland THE MISSISSIPPI II

This well presented home is a great design for investment or to make your home. The Mississippi incorporates open plan living with separate lounge area, giving room for your family to grow. All of the bedrooms have excellent storage, with built in robes and additional pigeon hole shelving, giving everything a place. The master bedroom features an ensuite with a luxurious, extra large shower. This is a stylish and contemporary design available with skillion or hiproof design, at a price to make you smile.



FLOOR PLAN

LIVING AREA:	181.2m ²
ENTRANCE:	2.68m ²
PATIO:	15m ²
TOTAL:	198.88m ²

