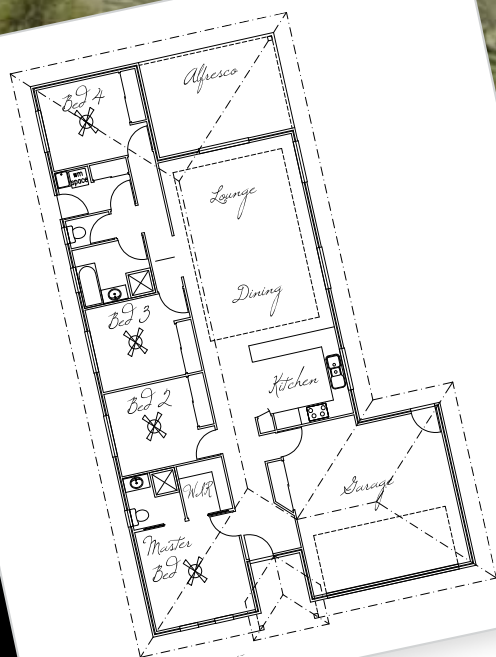


*Designer Range*

# Kentucky



## *floor plan*

LIVING AREA:	139.1m <sup>2</sup>
ALFRESCO:	17.1m <sup>2</sup>
GARAGE:	35.8m <sup>2</sup>
PORTICO:	4.5m <sup>2</sup>
TOTAL:	196.5m <sup>2</sup>

The Kentucky is a gorgeous design for today's modern family. Upon arrival you are greeted by an eye catching portico, featuring rendered pillars and an even display of box placed windows. The front façade features fabulous texture using hebel and sycon cladding. The entrance invites you to the stylish kitchen, which includes handsome stainless steel appliances. The living and dining areas feature stunning coffered ceilings, which open the space. The alfresco area, stepping out from the living/dining area, makes entertaining friends and family easy.

This four bedroom design is an elegant home which is perfect for today's growing family.

**P 07 5483 6866**  
**F 07 5483 6966**

34 Premier Ave,  
Jones Hill Q 4570

[admin@stirlinghomesqld.com.au](mailto:admin@stirlinghomesqld.com.au)



**STIRLING HOMES**  
**QUEENSLAND**

*Designer Range*

[www.stirlinghomesqld.com.au](http://www.stirlinghomesqld.com.au)