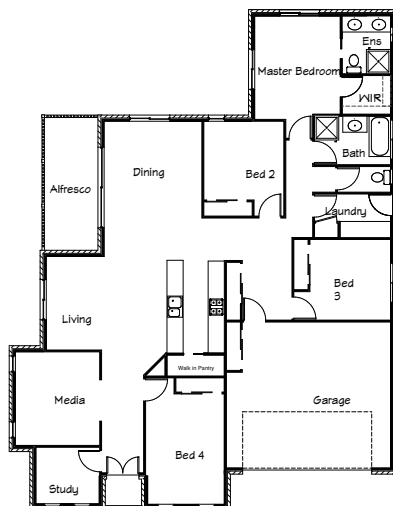




## Stirling Homes Queensland THE CONNECTICUT II

The Connecticut is a home that truly has it all. The Master bedroom is located at the back of the house, giving the feel of seclusion. This room has its own walk in robe and ensuite with his and hers vanities. And for the kids, there are three bedrooms with built in cupboards, but also a separate study and media room. The galley kitchen has a large pantry with plenty of storage room. The hallway and garage also provide storage space with floor to ceiling linen cupboards in both. The front facade features a raised porico with rock wall cladding - a stylish timber feature. The double hung windows not only add to the sleek design but are practical for the fourth bedroom & study. The Connecticut lives up to its name, being not only stylish, but family orientated also.



### FLOOR PLAN

<b>LIVING AREA:</b>	196.8m <sup>2</sup>
<b>OUTDOOR AREA:</b>	17.1m <sup>2</sup>
<b>TOTAL:</b>	213.9m <sup>2</sup>

