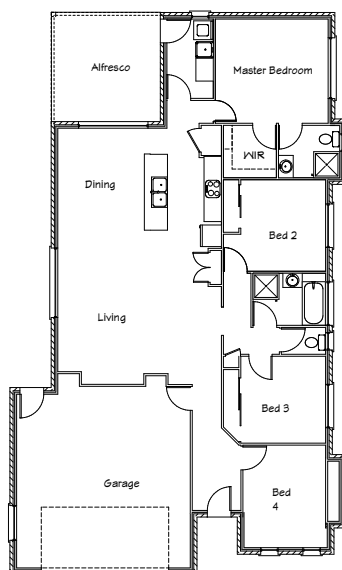




Stirling Homes Queensland THE VIRGINIA

The Virginia has been well designed for a narrower block, while still presenting everything you would anticipate in a large family home. The open plan living and dining areas make this house a practical, yet spacious design. All of the bedrooms line one side of the house, keeping them separate from the living areas, with the large master bedroom located at the rear of the house for privacy from the hustle and bustle from the hub of the home. The two storage cupboards in the garage also make the perfect area for a TV unit in the adjoining living room. The long gallery style kitchen is a great feature in an open plan home. With different facade options available this is a well priced stylish home.



FLOOR PLAN

LIVING AREA:	181.6m ²
OUTDOOR AREA:	15.1m ²
TOTAL:	196.7m ²

