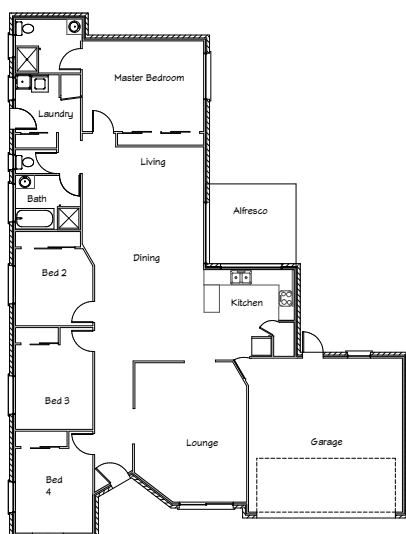




## Stirling Homes Queensland THE CALIFORNIA

The California is a versatile large home. The front façade has a unique and stylish appearance. The layout of this design is perfect for the triangle type blocks with wide frontage and becoming slimmer toward the back. The entrance is unique with privacy through the well laid out open plan living area. This home features a separate lounge area, perfect to turn into a formal lounge or media room. The large laundry suits the family lifestyle with bench space, broom storage and linen cupboard - it makes this chore easy. Featuring four bedrooms, abundant living areas and spacious kitchen, the California is perfect for modern living.



### FLOOR PLAN

<b>LIVING AREA:</b>	200m <sup>2</sup>
<b>OUTDOOR AREA:</b>	21.6m <sup>2</sup>
<b>TOTAL:</b>	221.6m <sup>2</sup>

