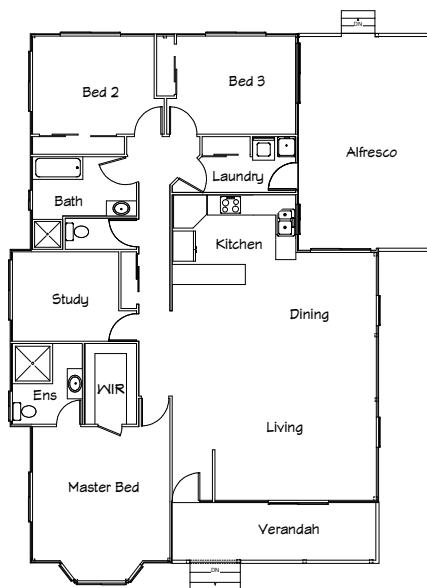




## Stirling Homes Queensland THE JERSEY

This smart design can be viewed as either a four bedroom home, or three bedrooms with study. The Master Bedroom is located at the front of the house and features its own ensuite and walk in robe. The views from the master are projected through a lovely bay window, also allowing for superior natural lighting and air flow through the bedroom. Decks to the front and side of the home give you ample areas for outdoor entertaining, and also finish the look of this home tremendously. This quaint, country style home has all the perks of modern day living at an affordable price.



### FLOOR PLAN

<b>LIVING AREA:</b>	142.1m <sup>2</sup>
<b>VERANDAH:</b>	26.8m <sup>2</sup>
<b>TOTAL:</b>	168.9m <sup>2</sup>

