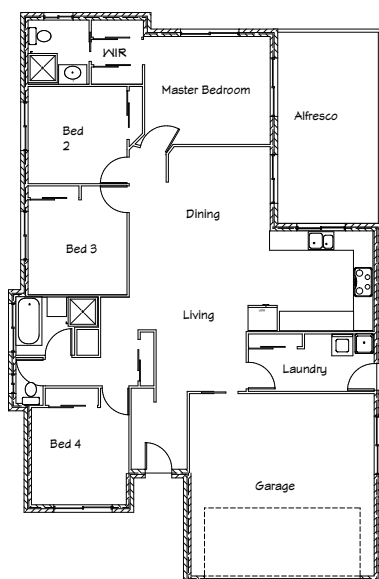




Stirling Homes Queensland
THE CAROLINA

This modern home boasts clean, crisp lines on the front façade giving it a neat and tidy street appeal. Once inside this home you are greeted with a large open plan living area. To your right is a spacious kitchen, located right beside the alfresco area, sure to make your next bbq a breeze. The master bedroom with walk in robe and ensuite is hidden from view by a small hallway. This gives a feel of seclusion and makes for a perfect parents retreat. With a garage at the front of the house, this design suits the city block perfectly.



FLOOR PLAN

FLOOR AREA:	159.74m ²
VERANDAH:	21.27m ²
TOTAL:	181m ²

