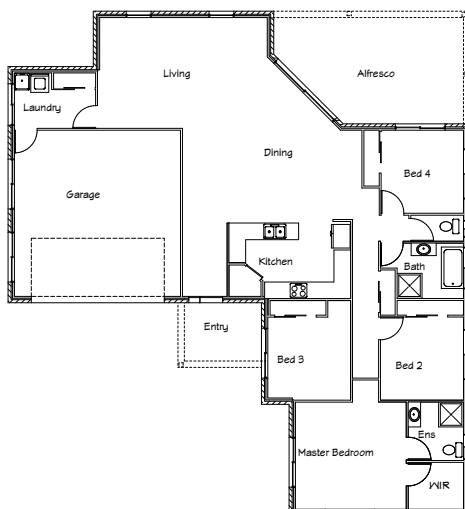




Stirling Homes Queensland THE TENNESSEE

The Tennessee is a well designed home, perfect for the growing family. The home centres around the open living and dining area, which both adjoin the back patio. This is a perfect area to turn into your own alfresco dining area, or to just entertain friends. The rest of the rooms are all separated from the main living area of the house, giving much needed privacy after a long day. There are built in robes in all of the rooms, with the master bedroom featuring a walk in robe.

As well as this, there are two linen cupboards in the house, giving ample storage space. With all these wonderful features, why not make the Tennessee your family's new home?



FLOOR PLAN

LIVING AREA:	159.5m ²
GARAGE:	38.8m ²
PATIO:	25.5m ²
FOYER:	4.8m ²
TOTAL:	228.3m ²

