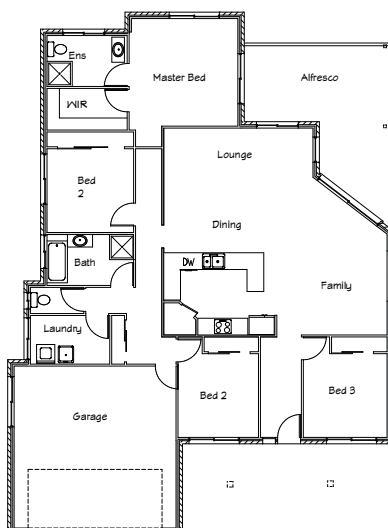




Stirling Homes Queensland THE KANSAS

This low maintenance, four bedroom home is a fantastic design for ownership or investment. The Master bedroom features an ensuite and walk in robe, both highly sought after features in today's market, while the other three bedrooms all have built in robes. The Kansas has a large kitchen and open plan living, flowing out onto the outdoor entertaining area. This is sure to be a hit when having guests over. The large double garage is situated at the front of the house, making this design ideal for a city block. The Kansas is built ready to move into including floor coverings, air-conditioning to the living area and ceiling fans in all the bedrooms.



FLOOR PLAN

FLOOR AREA:	180.6m ²
VERANDAH:	28.7m ²
TOTAL:	209.3m ²

