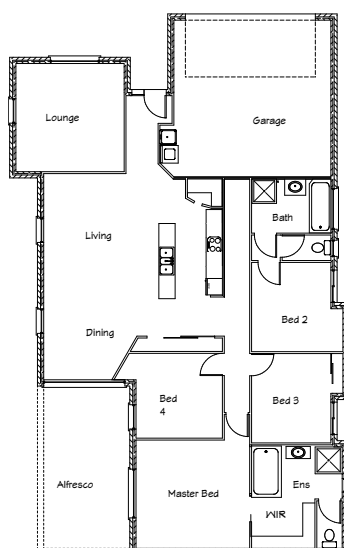




Stirling Homes Queensland THE HAWAII

Presenting beautifully from first sight, the Hawaii does not disappoint. The dutch gable and portico capture your eye, and draw you into the home. Once inside you are met by a beautiful entry that leads you into the living and dining area, and flows onto the spacious alfresco area. The master bedroom is a getaway just as good as Hawaii. The ensuite is simply stunning, with wall to floor ceiling tiles. There is also a spa and feature timber, louvred sliding doors opening into the Master Bedroom. The Hawaii also features a galley kitchen and separate lounge area, both highly sought after features in today's market. With all these stylish features at such an affordable price, you can't go past the Hawaii.



FLOOR PLAN

LIVING AREA:	161.5m ²
GARAGE:	37.6m ²
ENTRY PORTICO:	5.4m ²
VERANDAHS:	21.7m ²
TOTAL:	226.2m ²

