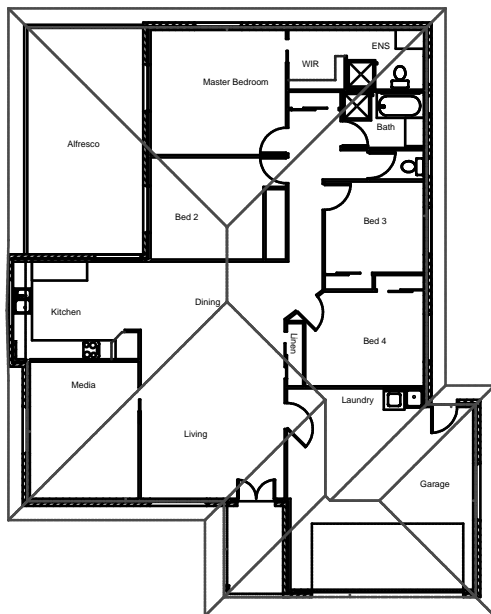




Stirling Homes Queensland  
**THE GEORGIA**

Created to suit a narrow allotment, this home is perfect for city living. As you walk into this home, you are greeted by a large, open plan living area. The modern kitchen is spacious, with ample cupboard storage. The beautiful kitchen leads you out onto the alfresco area, with more than enough room to seat the whole family. The bedrooms are all situated to one side of the house, away from the hustle and bustle of the living hub, a great way to get away and relax. The Georgia is an affordable home and has features to suit most, making it a perfect family or investment home.



**FLOOR PLAN**

LIVING AREA:	195 m <sup>2</sup>
OUTDOOR AREA:	33.5 m <sup>2</sup>
TOTAL:	228.5 m <sup>2</sup>

