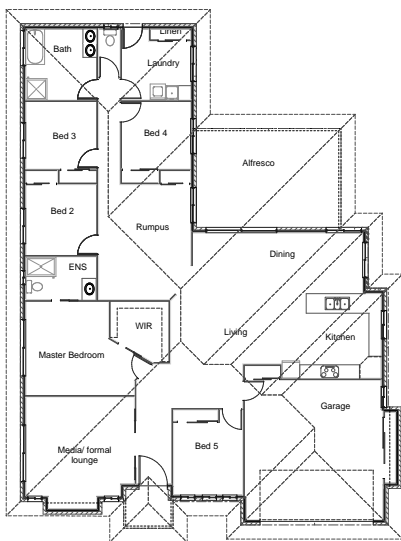


Stylish & Affordable



Stirling Homes Queensland THE WASHINGTON

This lovely, big home is a treat for the family. Upon arrival you are greeted by a formal lounge room and study. This is perfect for those who have an at home business, as clients are greeted into the work station on arrival. The master bedroom is spacious with walk in robe and ensuite. The kids' bedrooms all surround a large rumpus room, perfect for playing and entertaining friends. As you enter the large living and dining area, you are led out onto the alfresco dining area. The rumpus room is visible from the alfresco so mum and dad can keep an eye on the kids. This design also boasts plenty of storage space with large cupboards in the laundry and garage. With all of these features, the Washington is a design the whole family can be happy with.



FLOOR PLAN

LIVING AREA:	250.1m ²
OUTDOOR:	30.5m ²
TOTAL:	280.6m ²



Ph: 07 5483 6866 | Fax: 07 5483 6966 | Email admin@stirlinghomesqld.com.au
16 Premier Ave, Jones Hill Q 4570

www.stirlinghomesqld.com.au